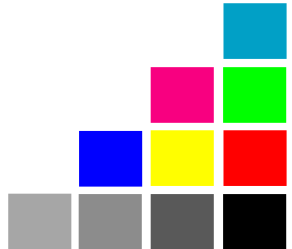


# Digital Camera

---

## User Manual



## A Quick Start of This Digital Camera

- Before using this camera, you may want to learn its main functions:

### Still Camera Mode

In this mode, You can take pictures and movies.

### Mass Storage Mode

(USB Portable Disk)

In this mode, your camera will behave like a harddisk which contains your picture files. You can drag-and-drop pictures to your computer.

### PC Camera Mode

You can export video to the network or a computer in this mode, which has two compression settings and framerates to choose from.

### Self-Timer

This camera has a built-in ten-second self-timer that allows you to take pictures of yourself.

### Playback Mode

In this mode, you can playback and delete pictures. Your pictures will be displayed on the built-in LCD monitor.

## A few important tips:

- Before using this camera for the first time, take a test shot to see if it's working.
- In case of camera failure, we are not responsible for the loss or damage of pictures.
- If unused for 2 minute, this camera will suspend itself. Your picture(s) will still be safely stored in the internal memory.
- Do not use rechargeable (Ni-Cd) batteries with this product. We suggest you to use alkaline batteries. To replace a battery, please switch it off.
- Please remove the battery before prolonged storage.
- The camera body may becomes warm after a period of using.
- Please follow your country's copyright laws when you're taking pictures.

## Table of Contents

A Quick Start of This Digital Camera	2
Table of Contents	3
System Requirements	4
Getting to Know Your Digital Camera	5
Functions and Modes	6
Power	6
How to record images and short movies	7
How to Correct Fluorescent Banding Noise	7
Something About the Light Condition	8
Mode Button	8
Mass Storage Mode(USB Portable Disk)	8
PC Cam Mode	9
Changing Image Resolution	9
The LCD Display	9
Backlight On/Off	9
Self-Timer	10
Delete	10
Software Installation	11
Technical Specifications	12
Camera Cautions	12

## System Requirements

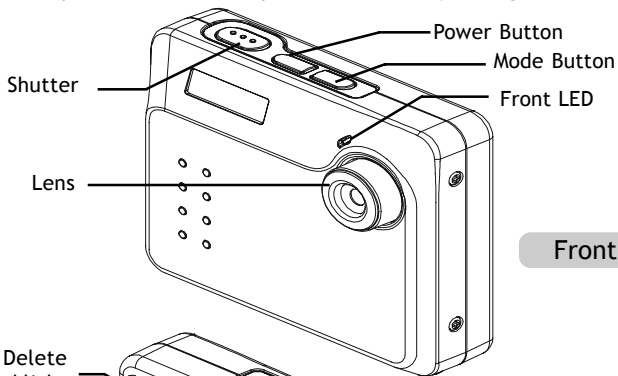
---

### For Microsoft Windows® Users

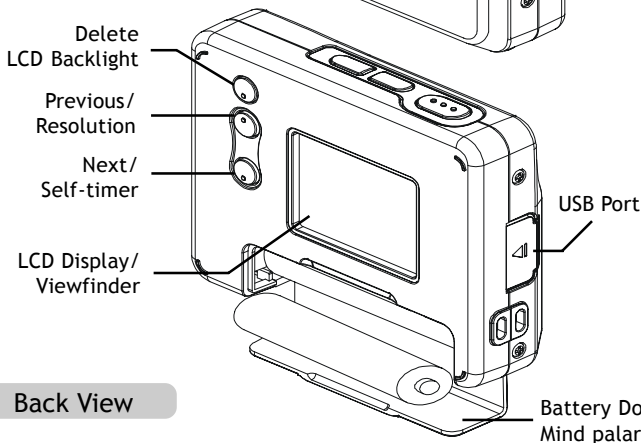
- Compatible with Microsoft® Windows® 98SE, Me, Windows® 2000 and Windows® XP
  - Direct Show 8.0 or later
  - Pentium® 200MHz or Pentium® compatible processor
  - 32 MB RAM or higher
  - USB Port
  - 200 MB free disk space
  - CD-ROM Drive
  - Color Monitor with High Color (16-bit) graphic capability or higher
  - Standard mouse and keyboard
- 
- Some models may not function properly due to proprietary software which could clash with our driver.
  - Compatible only with models with built-in USB ports.
  - The camera may not perform under the following conditions:  
PC with USB Hub and connected with USB port extension device, DIY, and modified computers.  
Windows 2000 up-graded from Windows 95/98/NT.
  - It can not operate under Windows 98/95/3.1 and Windows NT.
  - Under Windows 2000 you may only achieve optimum performance with Windows Professional
  - We are not liable for the damage of hardware and software due to the usage of this product
  - We are not liable for any claims in loss or damages of data via PC's malfunction resulting from usage of this product.
  - Design and specification subject to change due to the modification of the product without prior notice.
  - Windows is the registered trademark of Microsoft.
  - Other system products named in this package is copyright and patent protected.

## Getting to Know Your Digital Camera

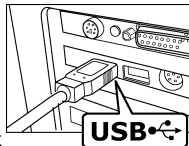
Refer to the picture below for a quick overview for your Digital camera.



Front View



Back View



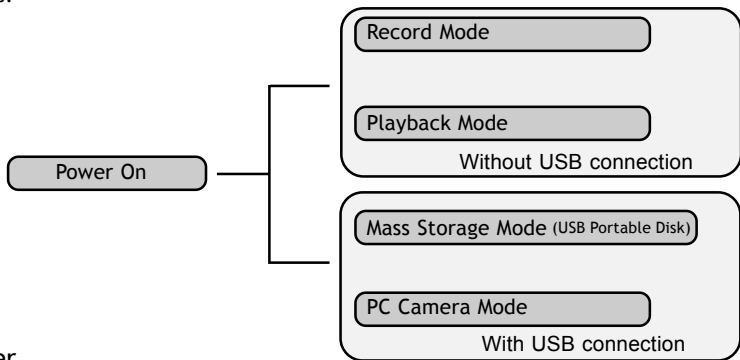
The USB (Universal Serial Bus) allows you to connect your Camera to a PC. One end of the USB cable goes to the camera's USB port and the other end goes to your PC's USB port.

Battery Door  
Mind polarity!

## Functions and Modes

---

You can cycle through the modes by pressing **MODE** button. If your camera is not connected to a computer, you can only access the Record and Playback Modes. If your camera is connected to a computer, you can access the additional two modes.



## Power

---

### Power On/Off

Press the Power Button to activate your Camera. Press it again and hold about three seconds to turn this camera off. Using this camera is really easy. You can simply point and shoot. First, you have to make sure you are in the Recorder Mode. Then use the LCD viewfinder to guide you. You can then press the Shutter Button to take your first picture. That's so easy.

### Power Low

If your battery is about to run out, you will see a dead battery icon (🔋) shown on the top center of the LCD. Your camera will turn off itself in 5 seconds.

## How to record images and short movies

---



### The Picture Counter

Under normal condition, you can take as many as 180 Low resolution or 30 High resolution or 20 Fine pictures. You can see the remaining picture counter displayed on the top right corner of your LCD. If you have taken 5 pictures at fine resolution, you can shoot another 15 pictures at that resolution. Your LCD will display "15."

### Taking Your First Picture

1. Please press the Power Button to turn on your camera.
2. Make sure you're in the Record Mode.
3. Use the LCD to frame your picture.
4. Press the Shutter button and the LCD display will display the number of remaining pictures until "00" is displayed.



### To record short movies, do the following:

1. Please press the Power Button to turn on your camera.
2. In Record Mode, press the /▲ Button.
3. Press the **Resolution** button to select  (VIDEO) from the OSD.
4. Press the **Shutter** button to start recording. To stop recording, press the **Shutter** again.

### How to Correct Fluorescent Banding Noise

When you're taking pictures, the horizontal banding noise lines sometimes appear on the screen. This banding is caused by the fluorescent lighting flickering on and off at the main supply frequency.

To remove the banding noise, please follow the steps:

1. Under **Record Mode**, press the /▲ button from the arrow buttons and hold still.
2. Press **Shutter** button once to call out the default setting **Band 50 Hz** ( **50Hz**).  
to Press **Shutter** button for the second time will switch the setting to **Band 60 Hz** (



This must match up with the frequency of the main power supply in your country. Please refer to the following figures:

50 Hz is used in: Europe, P.R.C., Hong Kong, Australia, New Zealand and South Africa.

60 HZ is used in: America, Canada, Taiwan, Japan, and Korea.

## Something About the Light Condition

This camera does not have a flash light. Therefore, it can not take pictures when the light is really dim. If you try to shoot under low light, the LCD will display "LOW LIGHT." You can still take under-exposed pictures.

## Mode Button

---

Press the MODE Button to switch between two primary modes:

### Record Mode

When your camera is in Record Mode, you can take pictures.

### Playback Mode

You can press the MODE Button to switch to Playback Mode which lets you preview or delete pictures. Press the MODE Button again to return to Recorder Mode.

## Mass Storage Mode(USB Portable Disk)

---

Connect your Digital camera to a computer, it will turn to Mass Storage Mode. In Mass Storage Mode, your camera acts exactly like a harddisk. That means you can access it via the Windows user interface. You can copy, move or delete pictures exactly the way you manipulate files.



## PC Cam Mode

---




When you're in the Mass Storage Mode, press MODE again to enter PC Cam Mode. In this mode, you can use the specified software to display web video on a computer.

## Changing Image Resolution

---

You can change image resolution whenever you want.

1. In Record Mode, press the /▲ Button.
2. The LCD will display your current resolution setting on the top left corner.

Which could be  for Fine Resolution or  for High resolution or  for Low resolution.

## The LCD Display

---


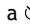
### Backlight On/Off


To save energy, Digital camera allows you to switch off the LCD panel's backlight. In Playback Mode, the backlight will always be on. In Record Mode, you can switch it on or off at will.

In Record Mode, press the  Button to turn the backlight on or off.

If you leave your camera unused for one minute with backlight on, the backlight will go off to preserve energy. After another one minute's inactivity, it will turn itself off. When the backlight is off, your camera will turn itself off after two minutes if unused.

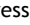


## Self-Timer

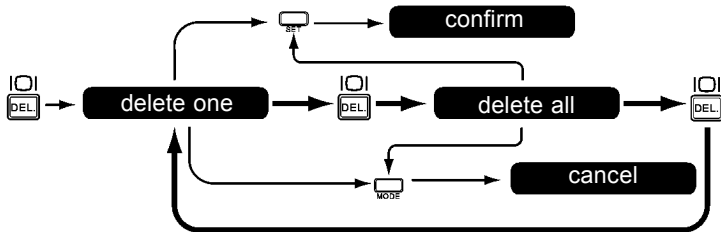
To use the self-timer, press the /▼ Button to activate the 10-second built-in selftimer. You will see a  icon on the camera's top left side. Press the Shutter Button to start counting down. The camera's front LED will blink until a picture is taken after 10 seconds.

**ATTENTION:** When your camera's internal memory is full, the LCD will display a huge  icon in the center with "Memory Full" under it. If memory is full, you can not take any new pictures.

## Delete

If you want to delete a picture, please switch to Playback Mode, and then select the picture to be deleted. You can delete one picture, or all pictures.

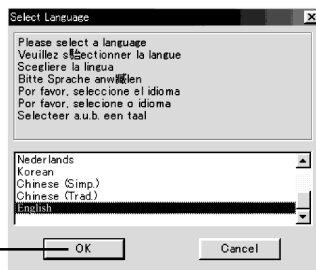
To select the picture to delete, press either Previous /▲ or Next  Button to navigate. When the picture is located, press /DEL to access the delete menu.



## Software Installation

### How to Install the Driver

1. Insert the CD-ROM disc into the CD-ROM drive and close the CD ROM draw.
2. An installation wizard will automatically launch.
3. Click the driver's icon.
4. Follow the instructions presented on the screen to complete the installation.
5. Select the Language that you want and press "OK"
6. Click "OK" to restart your computer and wait for your PC to restart automatically.



#### Notes:

If the setup screen doesn't appear after loading the CD, then you can manually start it by double-clicking the "My Computer" Icon on your desktop, then double-clicking the icon for the CD-ROM drive.

When the CD-ROM window opens, double-click the driver's icon.

## Technical Specifications

---

Imaging device:	CMOS Sensor
Image Resolution:	Fine: 2048 x 1536 (Hardware enhanced) High: 1600 x 1200 Low: 640 x 480
Compression Format:	JPEG/AVI
Image Storage:	Fine 20 pictures, High 30 pictures, Low 180 pictures
Memory:	16 MB Flash
Lens:	F2.8
Focusing range:	60 cm ~ infinity
Shutter:	1/15 ~ 1/4000 second
Self-timer:	10-second delay
White Balance:	Auto
Exposure:	Auto
I/O interface:	USB
Power Source:	AA Alkaline Battery x 1
Size:	72.5 x 62 x 19.9 mm (L x W x H)

Camera should only be operated within the following environmental conditions:

- 41-104° Fahrenheit; 5-40° Celsius
- 20% - 85% relative humidity, non-condensing

## Camera Cautions

---

- Never immerse any part of the Digital camera or its components into any fluid or liquid.
- Disconnect the camera from your PC or Mac before cleaning it.
- Remove dust or stains with a soft cloth dampened with water or neutral detergent.
- Do not place hot items on the surface of the camera.
- Do not attempt to open or disassemble the camera. This will affect any warranty claim.